



Océ TDS700

Fits the way
you want it



Productive, flexible wide format system

The Océ TDS700 meets all these requirements. With a robust, configurable printer, the powerful Océ Power Logic® controller, a choice of two scanners and a wide range of software, it fits the way you work both now and in the future.

Océ Printer Technology

Printing technology

Electrophotography (LED) with organic photoconductor drum

Resolution

600 dpi × 1200 dpi pico printing

Print optimization

User specified print optimization modes:

- Lines & text for excellent line accuracy
- Standard for excellent grays and smooth solid fills
- Poster for excellent grays and smooth solid fills

Fusing technology

Océ Radiant Fusing; instant-on

Toner system

- Clean closed toner system
- Refill toner while printing

Throughput

Speed

Constant 19.7 linear ft./min.

Warm-up time

None, instant-on

Paper path

Optimized, continuous printing speed when printing jobs from different rolls, 1 knife per drawer

Print productivity

- 4.7 E portrait/min., 8.5 D-ARCH/min., 9.1 D-ANSI/min. for regular media
- 11.8 ft./min. for heavy media

Document delivery

Standard integrated receiving tray (IRT) for 100 prints (E) without interfering with access to toner and media



Media

Media sources

Choice of 16 configurations:

- 2 to 6 rolls and/or
- 1 to 3 sheet feeders and
- manual sheet feed section

Media capacity

Up to 650 ft. per roll (70 gr/m² paper) with automatic switching when roll is empty

Media width

Roll width 11.5" – 36"

Media types

Plain, transparent, recycled, fluorescent, and colored papers; films and vellums

Output sizes

DIN and ANSI formats from A4 to A0 or A-size to E-size, up to 49 ft. long

Environment

Dimensions

56.7" (W) × 31.5" (D) × 58.1" (H)

Weight

Printer 2 roll configuration: 639 lbs.

- 62 lbs. for additional roll drawer (2 rolls)
- 42 lbs. for additional sheet feeder

Printer 6 roll 1 sheet feeder: 805 lbs.

Main supply

100/120/230 V; 50/60 Hz

Power consumption — printer + controller (printer)

Sleep mode: 65 W (6.3 W)

Standby mode: 90 W (32.4 W)

Operational: 1.52 kW (1.46 kW)

Sound pressure

Standby mode: 18 dB(A)

Operational: 58 dB(A)

According to EN 7779 operator position

Dust emission

6 mgr/hr. at continuous operation

Ozone emission

0.3 mgr/hr. at continuous operation

Safety approvals

TüV GS, CETECOM, CE, UL, (c)UL,

CB, FCC Class B

Other approvals

The TDS700 has earned the Energy Star®



Océ TDS700 Flexible Scanner

Scanning technology

Océ patented Direct Scan color technology,

- Innovative light source—accurate colors
- Single mirror—eliminating the risk of distortion
- High resolution camera ensuring color consistency and sharpness
- Océ Image Logic® technology real-time image processing
- 1 × reduction type CCD camera

Resolution

575 dpi (optical), up to 600 dpi interpolated

Copy and scan modes

- Lines & text, photo, grays & lines, dark original, blueprint, transparent
- Color Scan (optional)

Scanner user interface

Intuitive and multilanguage

Scanner templates

- 5 user-defined scanner templates for copying
- 5 user-defined scanner templates for scan-to-file

In other words: more complex jobs can be performed at the touch of a single button

Camera

Single 3 color linear CCD, 21360 pixels per color line, 24 bits color

Scanner panel

Can be positioned as needed

Throughput

Scan/copy speed (standard)

- B&W 10 linear ft./min. or 2 inch/sec.
- Grayscale and color (option) 3.5 linear ft./min. or 0.7 inch/sec. constant in all scanning modes

Scan/copy speed (option)

- Black and white up to 16.4 ft./min. or 3.3 inch/sec.
- Grayscale and color up to 13.1 ft./min. or 2.8 inch/sec.

Warm-up time

None, instant-on even for color scanning

Output reception

- Automatic rewinding
- Integrated delivery tray (no extra footprint)

Copying behavior

No user intervention with automatic width detection and roll selection

Size recognition

Accurate digital automatic width detection, indication on scanner panel of the exact measured width

Concurrency

- Continuous feeding of copy jobs and scan jobs during printing of copy and print jobs
- Pre-programming of next job

Original

Scan width

36"

Original feed

Face down, right align, automatic feed off/on

Original size

Minimum 8" (L) × 8" (W)

Maximum 19.7 ft. (L) × 40" (W)

Maximum thickness up to 0.12"

Imaging

Image processing

Océ's patented Image Logic technology in 4 steps converting RGB data into 256 greyscales, removing unwanted background, sharpening text, enhancing weak information, and ensuring smooth gradients.

Exposure control

Automatic, manual fine adjustment, background compensation (on/off)

Reproduction scale

- Custom zoom 10–1000%, adjustable in 0.1% steps

- Auto zoom to standard paper format

Scan accuracy

0.1% ± 1 pixel

1:1 Inaccuracy for E original

Below 0.3%

Image editing

Image shift, align, mirror, crop, delete area

Copy stamping (option)

Stamp content: free text, date, time

Number: up to 50 user defined stamps

Selection: from comprehensive list on scanner panel

Color space (scan to file option)

Accurate sRGB

Copy Functions

Multi-copy mode

1–999 copies

Input modes

- Single sheet
- Set collated or not
- Not collated

Set memory

Up to 999 copies from a set of at least 2400 E originals

Output roll selection

Manual or automatic selection with user defined user defined criteria

Output edges definition

Leading and trailing edge adjustments.

Standard cut and synchro cut modes.

Scan Functions (Option)

Scan technology

Océ Color Image Logic technology intelligent image processing for B&W, grays, and full color with up to six special modes for the “right the first time” results

Resolution

Selectable from 72 up to 600 dpi

Data format

TIFF (uncompressed, Packbits, G3, G4 and LZW), PDF (uncompressed, Flat LZW and G4), CALS, JPG

Scan modes

Single scan, stream feed productive batch scanning with or without check plot

Speed in B&W mode

Maximum 16.4 ft./min. at resolution up to 200 dpi

Speed in grays and color mode

Maximum 13.1 ft./min. at resolution up to 150 dpi

Environment

Dimensions

51.2" (W) × 25.6" (D) × 51.2" (H)

Weight

154 lbs.

Main supply

100–230 V, 50–60 Hz

Power consumption

Sleep mode: 5 W

Standby mode: 19 W

Operational: 104 W

Sound pressure

Sleep mode: < 23 dB(A)

Standby mode: 23 dB(A)

Operational: 50 dB(A)

According to EN 7779 operator position

Safety approvals

TüV GS, CE, UL, (c)UL, CB, EMC

Directive 89/336/EEC, FCC

Other approvals

The TDS700 has earned the Energy Star®



Océ TDS700 Productive Scanner

Scanning technology

- Océ Image Logic technology real-time image processing hardware
- 1 reduction type CCD camera

Scan resolution

- Scan resolution is 200 × 400 dpi (400 dpi in transport direction) in grayscale domain
- Océ Image Logic technology converts the 200 dpi (CCD resolution) into 400 dpi

Copy and scan modes

- Lines & text, photo, grays & lines, dark original, blueprint, and printed matter

Scanner user interface

Intuitive and multilanguage

Scanner templates

4 user-defined templates for copy or scan-to-file

Scanner panel

Easily readable, slightly tilted, back lit scanner panel

Throughput

Scan speed (standard)

16.4 ft./min. or approximately 4 E/min.
independent of original mode

Warm up time

None, the scanner is instant-on

Output reception

- Automatic rewinding or
- Original delivery tray (option)

Copying behavior

Automatic, no user intervention with
automatic width detection and roll selection

Size recognition

Automatic width detection with built in
sensor

Concurrency

- Continuous feeding of copy jobs and
scan jobs during printing of copy jobs
and print jobs
- Pre-programming of next job

Original

Original feed

- Face down, right aligned
- Automatic feed off/on
- Rewind original to front off/on

Originals

- Automatic original size detection
- Image width: 8" – 36"
- Original width: 8" – 40"
- Original length: 6" – 49 ft.

Maximum thickness

0.04 in. of original and up to 0.12 in. for
binding strip

Imaging

Image processing

Océ patented Image Logic technology in
4 steps, converting data in 256 greyscales,
removing unwanted background, sharpening
text, enhancing weak information, and
ensuring smooth gradients

Exposure control

Automatic, manual fine adjustment,
background compensation on/off

Reproduction scale

- Scale: 25% – 400% (adjustable in 1%
and 0.1% steps)
- Programmable fixed steps
- Auto scale to paper size
- Scale table with predefined media size
conversions

Scan accuracy

0.1 %

1:1 inaccuracy for E original

Below 0.3%

Image editing

- Image align: horizontal left, middle, right
- Image align: vertical top, center, bottom
- Image shift: horizontal/vertical
- Image mirroring

Copy stamping

Stamp content: free text, date, time

Number: up to 50 user defined stamps

Selection: from comprehensive list on
scanner panel

Copy Functions

Multi copy mode

1–999 copies

Input modes

- Single sheet
- Set collated or not
- Matrix copy (option)

Set memory

Up to 999 copies from a set or up to 2,400
E originals

Auto zoom

Copy sets with different original sizes to a
predefined size without the need to adjust
the zoom factor after each original

Output roll

Automatic roll selection, manual, user
defined

Output edges

Leading and trailing edge adjustments
Standard cut and syncho cut modes

Scan Functions (option)

Scan technology

Océ Image Logic technology intelligent
image processing for B&W, grays with up
to six special modes for the “right the first
time” results

Resolution

Selectable from 75 up to 400 dpi

Data format

TIFF (uncompressed, Packbits, G3, G4
and LZW), PDF (uncompressed, Flat
LZW and G4), CALS

Scan modes

Single scan, stream feed productive batch
scanning with or without check plot

Speed in B&W and gray mode

- 32 ft./min. at resolutions up to 200 dpi
- 16.4 ft./min. at resolutions over 200 dpi
to 400 dpi

Environment

Dimensions

51.7" (W) × 23" (D) × 53.3" (H)

Weight

198 lbs.

Main supply

100–230 V, 50–60 Hz

Power consumption

Sleep mode: 5 W

Standby: 97 W

Operational: 101 W

Sound pressure

Ready: 19 dB(A)

Operational: 57 dB(A)

According to EN 7779 Operator position

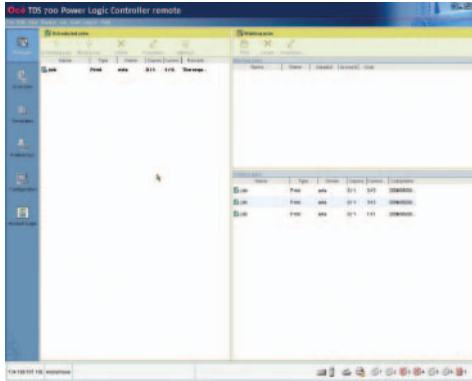
Safety approvals

TüV GS, CETECOM, CE, UL, (c)UL,
CB, FCC

Other approvals

The TDS700 has earned the Energy Star®

Océ Power Logic® Controller for the Océ TDS700



Platform

Océ controller with Windows® XP embedded

Concurrency

- Print, copy, and scan simultaneously
- Process next jobs during printing

Hard disc capacity

80 GB. Two high-speed hard discs, one dedicated to file spooling and one for set memory.

- Up to 999 copies of set of up to 2,400 E
- Send once, process once, print many

Memory

1 GB expandable to 2 GB for Océ TDS700 printer or hybrid with scanner

Graphical user interface

- Océ TDS700 Power Logic controller
- Remote (standard)
- Cabinet, keyboard, mouse, and monitor (option)

Standard interface

10/100BaseT with RJ45

Network protocols

TCP/IP, SMB (for scan-to-file only), IPX/SPX, FTP, LPD

Functions

- Multiple prints: up to 999
- Automatic file format sensing
- Automatic roll selection and switching
- Plot manipulation; auto-positioning, rotation, auto-scaling
- Pen management
- Auto rotate production mode for faster printing

Language sensing

Automatic Language Sensing (ALS)

File formats (standard)

- Vector: HPGL, HPGL/2, Calcomp
- Raster: HP-RTL, TIFF 6.0, CALS-I, NIRS, C4, ASCII, JPEG

File formats (option)

Adobe® PostScript® 3™ PDF printing

Power consumption

Controller: < 100 W

Electrical requirements

100–120 / 230 V, 50/60 Hz

Applicable software

Océ Power Logic® controller software

Océ TDS700 Power Logic Controller Remote

Basic applications

Océ Power Logic controller application, one integrated application for print job management, scan job management, system status management, scanner templates, system preferences, and network configuration

System status

Controller memory and processor, printer, scanner, media availability: size and type

System access

Password protected access levels with different rights to perform tasks or change system settings: anonymous, Repro Operator, Key Operator, System Administrator, and Océ Service

Print Jobs (Advanced Queue Management)

Print Job Management

Control your document workflow with one queue for print and copy jobs. Three views available to guarantee full control: scheduled jobs, waiting jobs, and printed jobs.

Scheduled jobs

- Print interrupt
- Move to top
- Move to waiting room

Waiting jobs

Print job, delete job

Printed jobs

Print job, delete job, and change properties of the job

Scan Jobs (option)

Applications



Océ Scan Logic® software option activates this window on the controller of the Océ TDS700 multifunction system.

Océ Scan Manager is the integrated scanning solution of the Océ TDS700.

Scan destinations

- 10 programmable destinations directly selectable from scanner panel
- Scan to Web using FTP
- Scan to network directory
- Scan to controller

File naming

Automatically generates unique file names for each scan. Change file name at point of scanning (GUI kit is required).

View

View scans at point of scanning. Make use of streaming technology particular productive for viewing scanned documents (GUI kit is required).

Scanner Templates

Application

Customer defines the scanner templates for copy or scan to file. Title of templates is defined by customer to improve usability.

Available templates

- Flexible scanner: 5 for copying and 5 for scanning
- Productive scanner: 4 scanner templates

Templates library

Store 45 scanner templates, description of stored settings can be read on scanner panel

System Preferences

Application

This application allows you to customize, change and save the system parameters to tune the system to the users document workflow. These parameters determine the default behavior of the print and scan systems.

Accessibility

Only the user with proper security rights can change and store the system settings

Store system settings

Unlimited number of system settings can be stored

Functions

Pen settings, printer language settings 19 languages, and general administrator settings

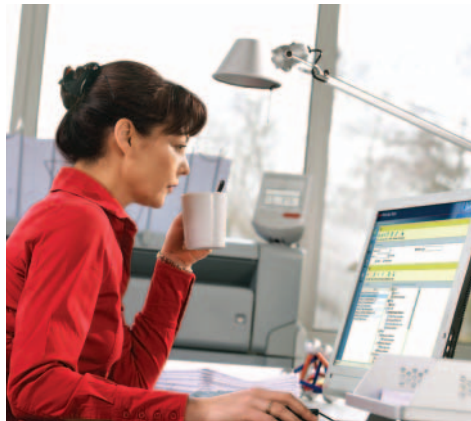
Network Configuration

Application

Customize, change, and save the parameters of the Océ TDS700 related to the network and IT infrastructure

Functions

Host information, network settings, system set up, and advanced security settings



Océ Matrix Logic® Technology (Océ TDS700 Productive Scanner Only)

Océ Matrix Logic technology makes it possible to copy a set once and print it out in different formats, for different user groups to support the document distribution rules within a company.

Functions

- Banner page
- Set up different distribution groups (i.e. store and select predefined print settings)
- Define different binding/finishing per set

Océ Print Exec® Software Workgroup (option)

Océ Print Exec software workgroup is a powerful, smart, and efficient web-based software application for printing sets in workgroup environments

Functions

- Back-channel printer status information
- Stamping
- Set up different print configurations (i.e. store and select predefined print settings)
- Banner page
- Pre-viewing plot files
- Save and recall print jobs
- Reprint Jobs

Océ Account Center (option)

Océ Account Center is a software application that enforces the entry of valid accounting information for system use and tracking of printing, copying, and scanning activities. Cost can then be allocated to the appropriate users, departments, and projects.

Functions

- Printer and scanner lock out
- Define number of accounting fields
- Customized account fields
- Pin Code functionality
- Alpha-numeric account input
- Customized filters
- Basic reports to be viewed in Excel®
- Open interface to integrate Océ Account Center with third party accounting software solution

Drivers and Job-Submission Software

Océ HDI driver

For AutoCAD® (LT) 2000, 2000i, 2002, 2004, 2005, 2006, and 2007

Océ Windows driver

- Windows 2000, XP, Windows Server 2003, Windows Terminal Server, Citrix® Metaframe
- Optimized for AutoCAD
- Microsoft® signature

Océ Adobe PostScript drivers

Windows 2000, XP, Windows Server 3 2003, and Mac® OS9 and OSX

Océ Print Exec Workgroup Basic software (standard)

Web-based software applications for easy printing of collated sets of up to 10 documents. Includes online viewing of printer status and scheduled prints and waiting room.

Copy Delivery Tray (option)

Model

Wheeled delivery tray with blower unit

Capacity

Up to 150 sheets (media type dependent) from A3 to Ao/E+

Power consumption

<40 W

Mains supply

120/230V, 50/60 Hz

Dimensions

46" (W) × 43" (D) × 56.7" (H)

Weight

78 lbs.

Océ On-line Folder (option)

Océ TDS700 on-line folder is fully integrated with the hybrid system. The user selects the right folding and delivery method on the scanner panel for copying and in the drivers or job submission tool for printing. The default folding method can be set via Océ TDS700 Power Logic controller Remote.

Folding methods

- DIN, Ericson, AFNOR-like
- Fanfold, fanfold and cross fold
- Length folding package: 11" – 12.2"
- Width folding package: 7.3" – 9.1"

Media material

Plain paper

Media size

- Width: 11" – 36"
- Length: 8 in. up to 8.2 ft. (cross fold and fanfold)
- Up to 19.7" (fanfold only)

Delivery methods

Integrated bins for fanfold and cross fold

- Stacker: 22 folded E
- Delivery belt unit (option): ± 75 folded E

Mains supply

120/230V, 50/60 Hz

Power consumption

Below 100 W operating

Weight

485 lbs.

Océ Double Decker (option)

The Océ Double Decker is a high volume stacker with two bins for an efficient delivery of unfolded prints. Each bin has a capacity of 750 sheets (engineering bond 20 lbs. or plain paper 75 g/m²).

Number of trays

2

Total capacity

1,500 sheets plain paper 75 g/m²

Capacity per tray

750 sheets plain paper 75 g/m²

Tray selection

- Manual switch
- Sheets are delivered to upper tray
- Sheets are delivered to lower tray
- Automatic: if tray is full, sheets go to the other tray ("tray full" by audio signal)

Delivery method

Face up

Stacking accuracy

High accuracy by use of magnetic alignment guides (eight included with Océ Double Decker)

Supported media

Same media as for printers (except for film)

Supported media sizes

A, B, C, D, E, maximum stacking length 47.2"



Printing for Professionals

Océ helps the people who make our world. Companies everywhere use Océ high-speed printing, technical documentation, and professional document systems to keep the wheels of business, industry and government turning. Océ also helps the world. Developing products and services that add value to the document processes of our customers, while minimizing environmental impact and protecting health and safety, has always been one of our core principles. From bank statements to utility bills, from blueprints to newspapers, from on-demand documents to wide-format display graphics, Océ helps our professional customers go "Beyond the Ordinary" in print and document management.

Océ North America

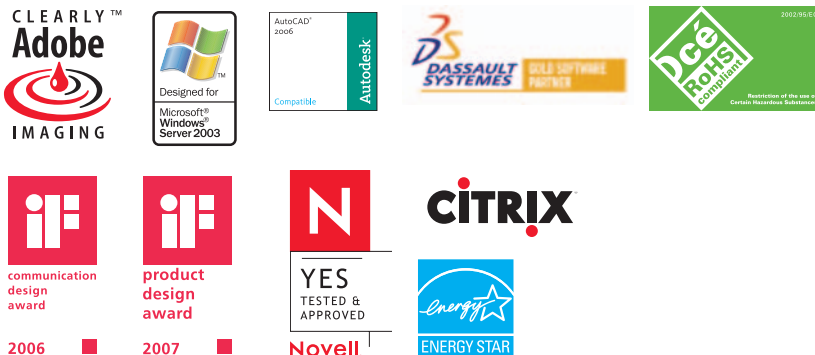
Océ Wide Format Printing Systems
5450 North Cumberland Avenue
Chicago, Illinois 60656
1-800-714-4427
1-773-714-4076
Fax 1-773-714-4056
email: us.info@oce.com

Océ-Canada Inc.
4711 Yonge Street, Suite 1100
Toronto, Ontario, M2N 6K8
Canada
1-800-668-1945
Fax 1-416-224-5778
email: info.ca@oce.com

Océ Mexico, S.A. de C.V.
Ave. Pol. Paseo de la
Reforma No. 1236 Piso 4
México City, DF 05348
52-55-5089-8700
email: mex.info@oce.com

For information and services, visit us at:
www.oceusa.com

Océ Wide Format Printing Systems Partners and Awards



© 2007 Océ. Illustrations and specifications do not necessarily apply to products and services offered in each local market. Technical specifications are subject to change without prior notice. The Océ logo, "Océ," "Océ Power Logic," "Océ Print Exec," "Océ Image Logic," "Océ Matrix Logic," and "Océ Scan Logic" are registered trademarks of Océ-Technologies B.V. "Océ Client Tools" is a trademark of Océ-Technologies B.V. "Adobe" and "Postscript" are registered trademarks of Adobe Systems. "Postscript 3" is a trademark of Adobe Systems. "Windows" and "Excel" are registered trademarks of Microsoft Corporation. "AutoCAD" is a registered trademark of Autodesk, Inc. "Energy Star" is a registered trademark of the U.S. Environmental Protection Agency. "Citrix" is a registered trademark of Citrix Systems, Inc. "Mac" is a registered trademark of Apple Inc. All other trademarks are the property of their respective owners.