



**Printing for Professionals**

Océ is a leading supplier of digital document management and delivery technology. The company's solutions are based on Océ's advanced software applications that deliver documents and data over internal networks and the Internet to printing devices and archives—locally and around the world. Supporting the workflow solutions are Océ digital printers and scanners, considered the most reliable and productive in the world. Océ also offers a wide range of consulting and outsourcing solutions.

**Océ** | TDS450

**System Information**



**Masters monochrome, ready for color**

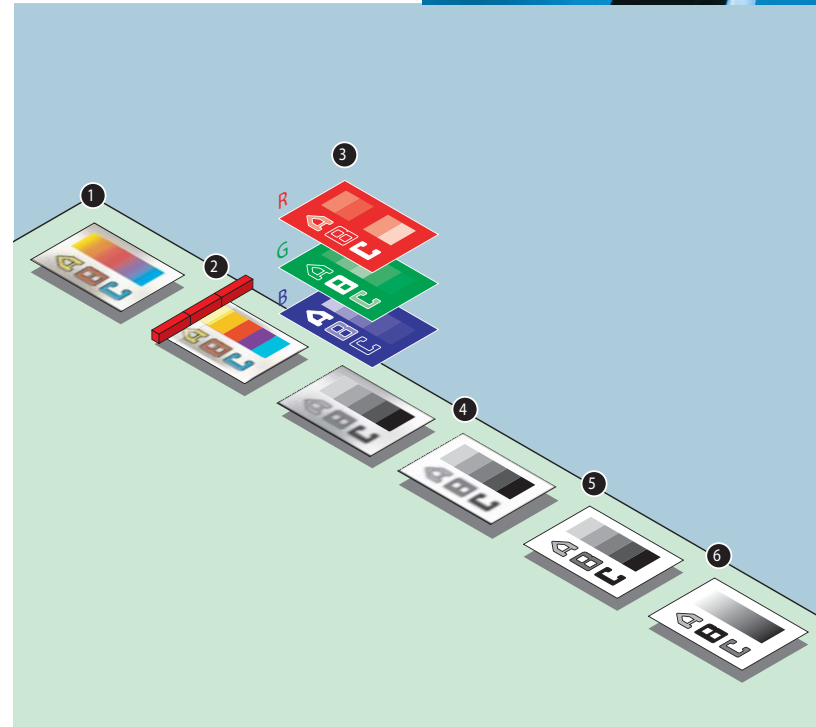
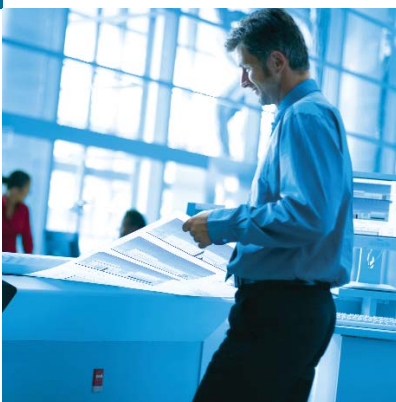
*Wide format print, copy and scan system*



## Masters monochrome, ready for color

*Wide format print, copy and scan system*

The resource intensive process of producing technical documents has just gotten easier with the Océ TDS450. The Océ TDS450 offers a flexible printing, copying and scanning solution that meets your business' productivity, quality, and cost efficiency requirements. With its advanced features, intuitive user panel, and optional full color scanning capability, it makes an ideal walk up print/copy solution now and for years to come.



### **Flexible Configuration: Fits into your environment**

The Océ TDS450 optimizes the handling of large format documents by offering a 10 lin ft/min. printing solution, that seamlessly fits into your workflow. Copy/scanning upgrade options give you a solution that works for you now and in the future. By offering exceptional job submission tools, such as Océ Client tools and print drivers for AutoCAD, Windows and Macintosh, Océ solutions compliment just about any working environment.

### **Advanced Scanning Options: Enhance communication**

The Océ TDS450 offers cutting edge scanning technology - facilitating the digitization of your physical archive. With color or monochrome scanning capability, the Océ TDS450 gives you the flexibility to capture red line or color mark up drawings for distribution and archival. The 10 scan-to-file destination options include scanning to the controller, network locations or FTP, enabling you to share and store digital images in one step.

Communication is accelerated within organizations or across multiple sites - saving hours and even days in the drawing review and distribution process. Océ brings you one step closer to a color workflow even if you may not be ready for full production color printing.

### **Océ Color Image Logic**

1. Original
2. Scanning
3. Color module converts RGB data to grays, making sure that the lightest colors are visible (e.g. yellow)
4. Automatic Background Compensation removes unwanted background
5. Filtering sharpens text and lines
6. Half-toning ensures smooth gradients

### **Optimized Workflow: Increases User Productivity**

Are your employees spending too much time defining copier settings, waiting for prints or manually collating sets of drawings? The Océ TDS450 is inherently designed to optimize your whole document creation process. The Océ Power Logic Controller ensures rapid processing of large files and concurrent scanning, copying, and printing thus minimizing queue length and employee downtime. Warm up time is eliminated with the "Instant-on" behavior of the Océ TDS450 printing system with the patented Radiant Fusing technology. Robust job submission tools, an intuitive user interface, and efficient automatic functions enable employees to spend less time handling the equipment and more time on core responsibilities. There are no complex operations. You get the output you need, when and how you want it.

### **Quality Output: Projects professional image**

Within the Océ TDS450 scanner, Océ provides Image Logic® technology, the industry standard for automatically enhancing scanned images and bringing the highest level of quality to copied or scanned documents whether black and white or color. Whatever the condition of the original drawing, the appropriate detail is retained, and background noise is removed at the touch of a button - leaving crisp clean drawings. To further ensure the professional presentation of your critical information, the TDS450 supports printing and scanning up to 600 DPI.

### **Useful Management tools: Controls system activities**

Océ provides tools and advanced security controls for managing access and control of the system. A cutting edge queue management application enables prioritization and reprint of print or copy jobs for tighter control of the printing/copying process. For organizations trying to control costs, the Océ Account Center option provides an effective means for cost recovery by tracking all the printing, copying and scanning activities of the system.

### **Customized Settings: Saves time and effort**

With the intuitive user panel and customizable scan-to-file and copy templates, employees can easily perform system functions, eliminating costly trial and error. With the simple operation on the Océ TDS450, you get the output you want on the first try. Even occasional users won't waste valuable time finding the right settings.

### **Proven reliability: Increase efficiency, decrease downtime**

Reliability and flexibility are key trademarks of Océ solutions - assuring the ability to meet your tough deadlines. Océ systems are highly regarded for their continuous, trouble-free performance- minimizing system and employee downtime.

### **Environmentally friendly: Fits in any work environment**

With today's lowest noise, heat and ozone emissions, the Océ TDS450 is ideal for departmental placement close to user workgroups. It ensures a comfortable working environment, exceeding industry standards and regulations.

